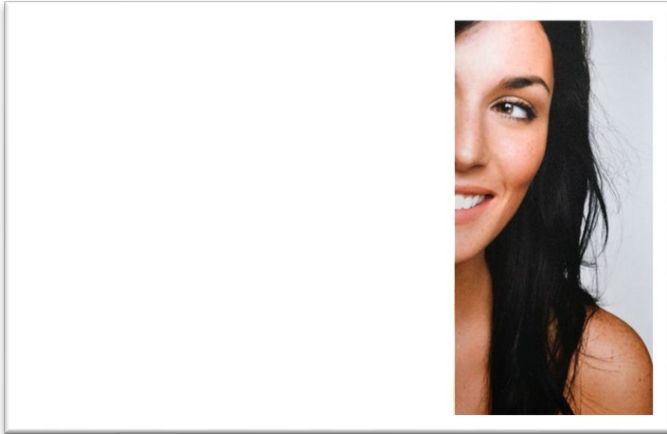


SOLYX® Glass Finishes SX-1920 Construction Matte White



Product Details

SOLYX® SX-1920 Construction Matte White is a flexible, opaque, white vinyl film that is coated with a removable, pressure-sensitive, acrylic adhesive and backed with a smooth, clear release liner. This film is designed for temporary light and visibility blocking applications to hide interior construction.

NOTE: Application environments and certain surfaces such as vinyl, glass, acrylic, styrene, and polycarbonate can cause increased adhesion and adhesive transfer. We recommend that all surfaces be tested for compatibility and removability.

Flammability Rating

This product meets ASTM E84 and is classified as Class A as defined in NFPA 101, Life Safety Code®.

LEED Credit EQ 4.1 Low Emitting Materials, Adhesives & Sealants

This product has zero VOC content according to 40 CFR 59, Subpart D (EPA method 24).

Durability

OUTDOOR: 2-5 years based on vertical exposure and depending on magnitude of UV exposure

INDOOR: 10 years

Installation and Warranty

Installation

Installation should be in accordance with the manufacturer's installation instructions. This film is applied using the same tools and techniques used for installing window tinting films.

Warranty

This SOLYX® product will be free from defects in material and manufacture for a period of one (1) year from the date of interior or exterior installation. See warranty information for specific details.

Product Distribution and Contact Information

Distribution

SOLYX® Decorative Films are available through authorized Installing Dealers, Distributors, or directly from Decorative Films, LLC.

Samples submitted upon request.

Contact Information

Decorative Films, LLC

1-888-657-5224

www.decorativefilm.com

Product Description

SOLYX® SX-1920 Construction Matte White is a removable opaque vinyl film designed for temporary light and visibility blocking applications to hide interior construction. It is also suitable for use in decorative design applications including shop windows, glass doors, etc.

Specifications

Product Code	SX-1920
Product Family	Specialized Function
Film Type	Vinyl
Adhesive Type	Pressure-Sensitive
Usage	Interior or Exterior
Available Width(s)	60" (1524mm)
Full Roll Length	200 linear feet
Thickness	4 mil
Shading Coefficient	0.95
Visible Light Reflection	3%
Visible Light Transmission	1%
UV Transmission	0%
Solar Heat Rejected	78%
Solar energy absorbed	42%
Infra-Red Transmission	2%

Product Construction

Face Film

4 mil Vinyl

Adhesive

Solvent-Based Clear Acrylic, Pressure-Sensitive

Release Liner

1.5 mil Polyester